

D1 Series Datasheet

SPRING-RETURN DIAPHRAGM PUMP

General Information

Featuring several configurations for pump head and power, Mytho's D Series mechanical diaphragm pump is suitable for multiple applications. The series covers a flow rate range from 5.5 to 500 l/h and backpressure up to 10 bar (standard configuration) or 16 bar (064 and 094 models in "enforced" configuration).

D1 pumps have a spring return mechanism within an aluminium housing, which is treated with cataphoresis coating and protected by a PP casing.

Each model can be supplied with a 3-phase or 1-phase IP55 motor and has three stroke rate values, which can be set manually or automatically using a linear actuator (accepts a 4 – 20 mA signal).



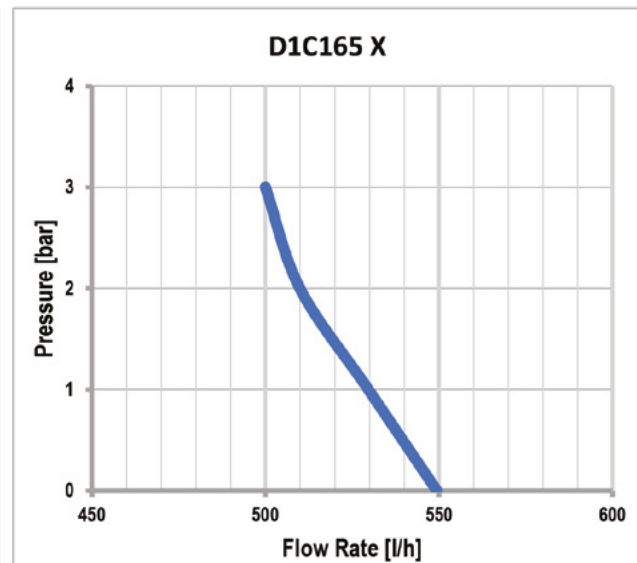
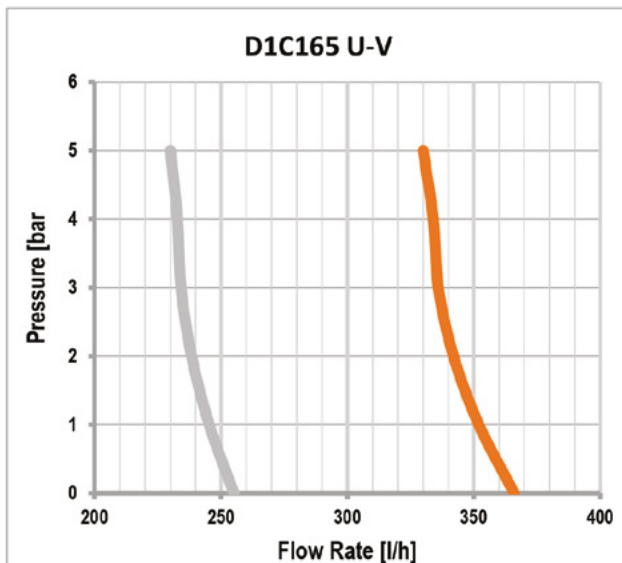
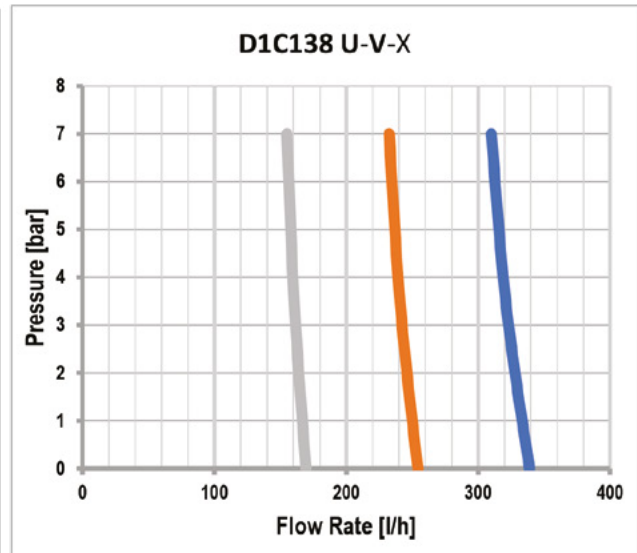
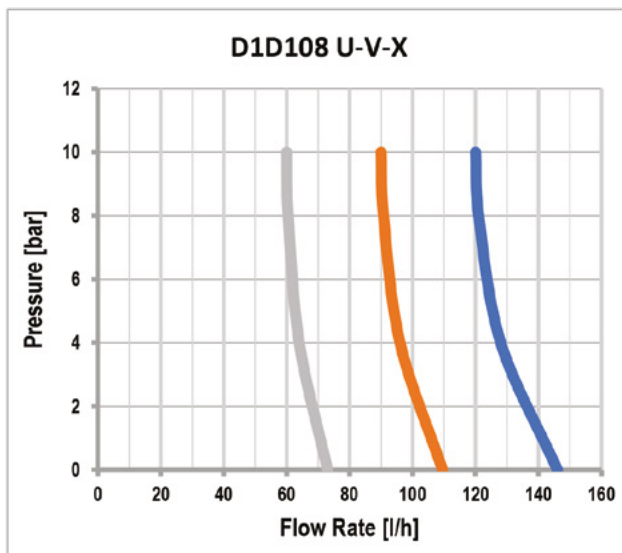
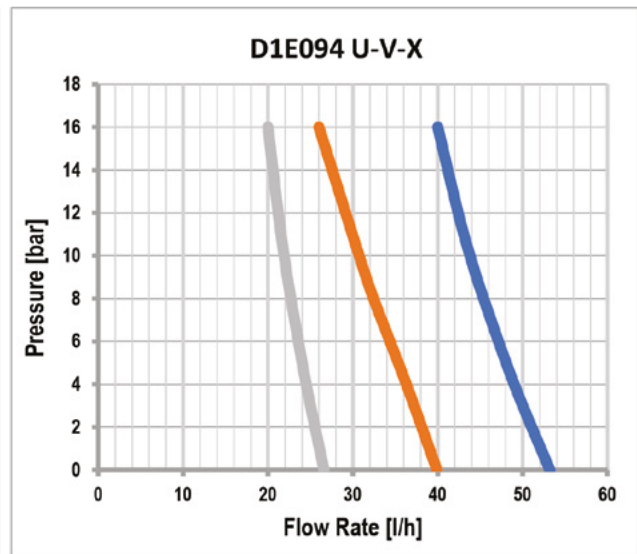
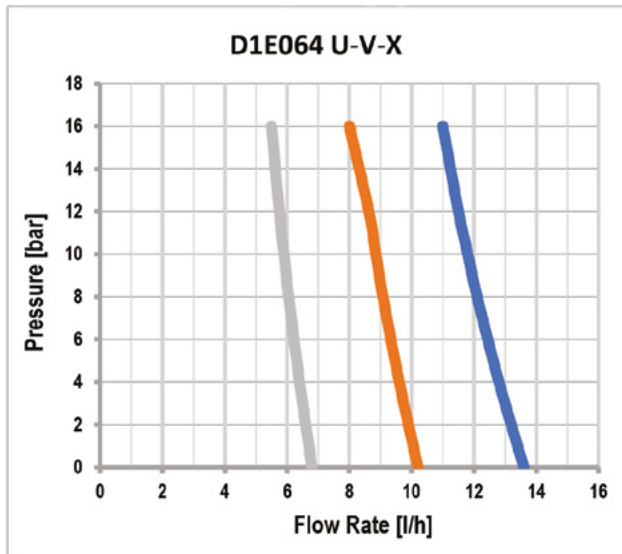
Features

- Flow rates: 5.5 - 500 l/h
- Max. backpressure: up to 16 bar
- Motor:
 - 0.18 kW - 3 ph (IP55)
 - 0.25 kW - 1 ph (IP55)
 - 0.37kW - 3 ph or 1 ph (IP55)
 - 0.55 kW - 1 ph (IP55)
- Stroke rate: 58 – 78 – 116 strokes/minute
- Stroke length: 2 – 4 – 6 mm
- Diaphragm diameter: 64 to 165 mm
- Pump head:
 - SS316L
 - PP
 - PVC
 - PVDF
- Maximum dosing temperature:
 - SS316L 40°C
 - PP 40°C
 - PVC 40°C
 - PVDF 40°C
- For use in ambient temperatures between -5°C and +40°C

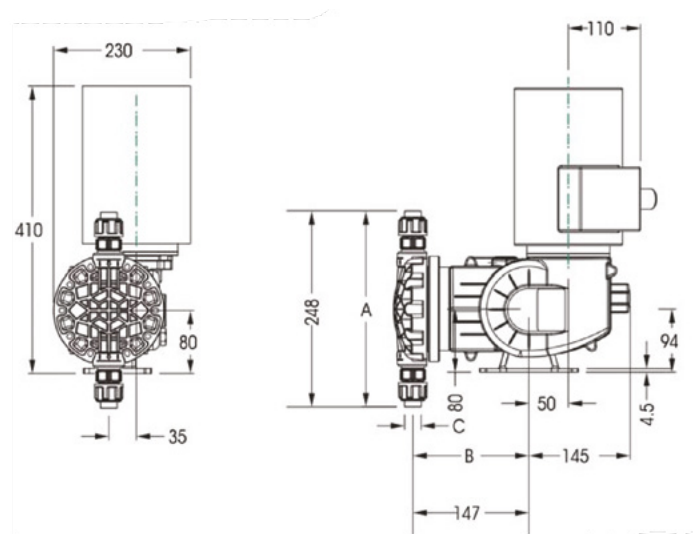
Applications

- Wastewater treatment
- Dairy
- CIP
- Fish farming
- Drinking water
- Cooling towers
- Boilers
- Reverse osmosis
- Galvanic industry
- Irrigation

D1 Series performance curves



D1 Series overall dimensional drawing



Diaphragm diameter	AISI 316 L				PVC			
	A	B	C	ext. head	A	B	C	ext. head
64	208	149	1/4" G F	98	150	144	1/4" G F	98
94	236	144	3/8" G F	117	172	146	3/8" G F	120
108	248	144	3/8" G F	131	212	146	3/8" G F	140
138	347	158	3/8" G F 1" G F	160	258	157	3/8" G F 1" G F	170
165	377	160	1" G F	193	296	157	1" G F	190

D1 Series hydraulic information

Model	Diameter [mm]	Stroke length [mm]	Frequency [stroke/1']	Flow rate [l/h]	Max pressure [bar]			Connections		Motor [kW/pole]	Weight [kg]	
					SS316L	PP/PVC	PVDF	SS316L	Other		SS316L	Other
D1E064U**A4000	64	2	58	5.5	16	10	10	BSPf 1/4"	BSPf 1/4"	0.18/4 (A4)	10.5	8.5
D1E064V**A4000			78	8								
D1E064X**A4000			116	11								
D1E094U**A4000	94	2	58	20	16	10*	10*	BSPf 3/8"	BSPf 1/4"	0.18/4 (A4)	11.0	8.5
D1E094V**A4000			78	26								
D1E094X**A4000			116	40								
D1D108U**A4000	108	4	58	60	10	10*	10*	BSPf 3/8"	BSPf 3/8"	0.18/4 (A4)	13.5	10.0
D1D108V**A4000			78	80								
D1D108X**A4000			116	120								
D1C138U**C4000	138	6	58	155	7	7	7	BSPf 3/4"	BSPf 3/4"	0.37/4 (C4)	18.5	12.5
D1C138V**C4000			78	220								
D1C138X**C4000			116	310								
D1C165U**C4000	165	6	58	230	5	5	5	BSPf 1"	BSPf 1"	0.37/4 (C4)	22.0	13.5
D1C165V**C4000			78	330								
D1C165X**C4000			116	500								

* Available with special enforced pump head for use up to 16 bar

D1 Series key code

Model								
D1								
Stroke length								
E	2 mm							
D	4 mm							
C	6 mm							
Diaphragm diameter [Ømm]								
064	64 mm							
094	94 mm							
108	108 mm							
138	138 mm							
165	165 mm							
Reducer ratio		Stroke/min [4 poles motor]						
U	24:1	58						
V	18:1	78						
X	12:1	116						
Liquid end	Pump head	Diaphragm	Valve	Seat	O-ring			
AA	SS316L		SS36L	SS36L	FPM			
PV	PVC		Ceramic	PTFE	FPM			
PP	PP		Ceramic	PTFE	FPM			
FF	PVDF		Ceramic	PVDF	FPM			
PA	PP	PTFE	SS36L	SS36L	FPM			
AE	S.S.316		SS36L	SS36L	EPDM			
PD	PP		Ceramic	PTFE	EPDM			
PE	PVC		Ceramic	PTFE	EPDM			
FE	PVDF		Ceramic	PVDF	EPDM			
Pump head	kW	Size		Power supply				
S0	Without motor							
A4	0,18	M63-B14		3PH 230/400V 50/60 Hz - TFC				
C4	0,37	M71-B14						
H4	0,25	M71-B14		1PH 230V - 50Hz				
L4	0,55	M80-B14						
C0	0,40	M71-B14		12Vdc				
Stroke length regulation								
0	Manual				[0-100% of stroke length]			
L	Electric actuator				[4-20mA input/output]			
Customisation								
0								
Optional								
0	Standard							
2	S0 (without motor) + adapter Kit							
E	Servoventilated (power supply 230V)							
M	Material certificate EN10204 -2.2							
D1	C	165	X	PP	C4	0	0	0